

2 Bromham Mill

Bromham Mill is a restored watermill with a picnic area. The ride is circular to take in the pretty village of Biddenham. About half of the route is on cycle tracks and nearly all the rest on quiet roads. It is best accessed from the riverside (Rides 1 and 4). This route is also connected to the Ouse Valley rides (10, 11 and 12 see Connections below).

5.5 Miles
EASY

PUBS

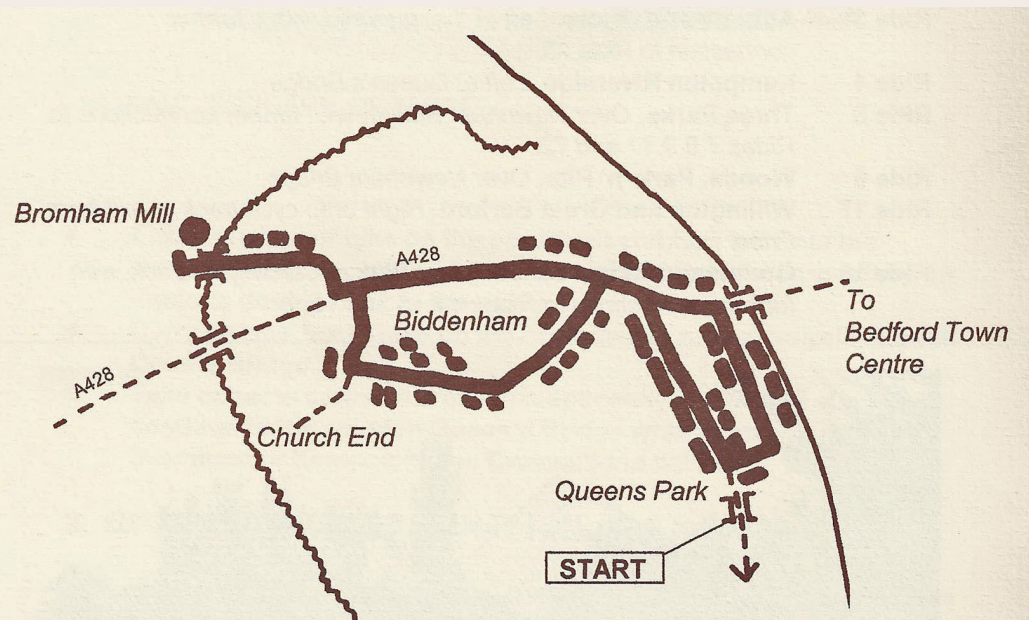
Three Tuns, Biddenham

TEAS & SNACKS

Refreshments, Bromham Mill

PICNIC SITES

Queen's Park
Riverside area
Bromham Mill



Route of Ride 2

Our description starts from and finishes at the Queen's Bridge between Queen's Park and Kempston (Ride 1) but you can join anywhere (e.g. the Mill car park).

1. QUEEN'S BRIDGE TO BIDDENHAM (2 miles)

- # Head north away from the river for Queen's Park. Cross over Honey Hill Road and cross over Ford End Road using the toucan crossing. Turn left and up the cycle track at the back of the houses. At the end of the playground and open space turn right and continue straight ahead in front of the old school building.
- # Go left at the T-junction (Marlborough Road) and then left and right into Westfield Road.
- # At the end go right and left into West Grove and left at the junction with the main road.
- # Turn left into Biddenham Turn and carry on into the village.



A RURAL SCENE AT THE HEART OF BIDDENHAM VILLAGE

2. BIDDENHAM TO BROMHAM MILL (1 mile)

The route to Bromham swings right up Gold Lane at the end of the village green but Biddenham is a pretty village and you may wish to first explore Church End (to the left).

- # Go left at the junction with Deep Spinney and continue up to the roundabout. Use the dropped kerbs on the footways and islands to cross the roundabout onto the cycle track into Bromham (left turn).

The Mill is on the far side of the bridge.

- # Take care turning right into the Mill.

3. BROMHAM MILL TO QUEEN'S BRIDGE (2.5 miles)

- # Return over the bridge and follow the cycle track all the way into Bedford.
- # Cross onto the south side of Bromham Road at the toucan crossing immediately after the Biddenham Turn junction.
- # At the end of the end of the cycle track turn right into West Grove, right into Westfield Road and the left and right into Marlborough Road. Turn right into Westfield Road and at the corner continue straight on and turn left onto the cycle track.
- # At the end cross Ford End Road using the toucan crossing, turn left and over Honey Hill Road into The Sllipe to return to the Queen's Bridge.

4. CONNECTIONS

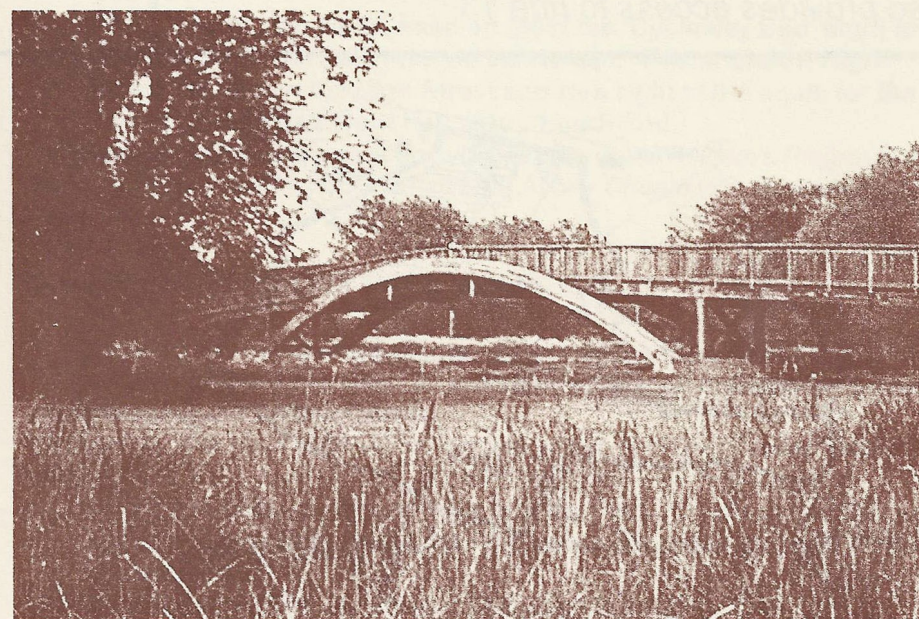
- Ride 1 to the rest of Bedford from Queen's Bridge.
- Ride 4 to Kempston from Queen's Bridge.
- Ride 10 to Stevington and Pavenham (*see Ride 10 Connections for detail*)

Via Ride 10 to :-

- Ride 11 Upper Ouse Valley (*see Ride 11 Connection for details*)
- Ride 12 Sharnbrook and Souldrop (*see Ride 11 Connection for details*)



BROMHAM MILL FROM THE RIVER BRIDGE



QUEEN'S BRIDGE, A WOODEN CYCLE BRIDGE OVER THE OUSE.